



Patrick
Square



The Habersham

3 Bedrooms | 3 Baths

1,751 sq. ft.
Air Conditioned Living Area
Plus 269 sq. ft. Porch



The Habersham

3 Bedrooms | 3 Baths



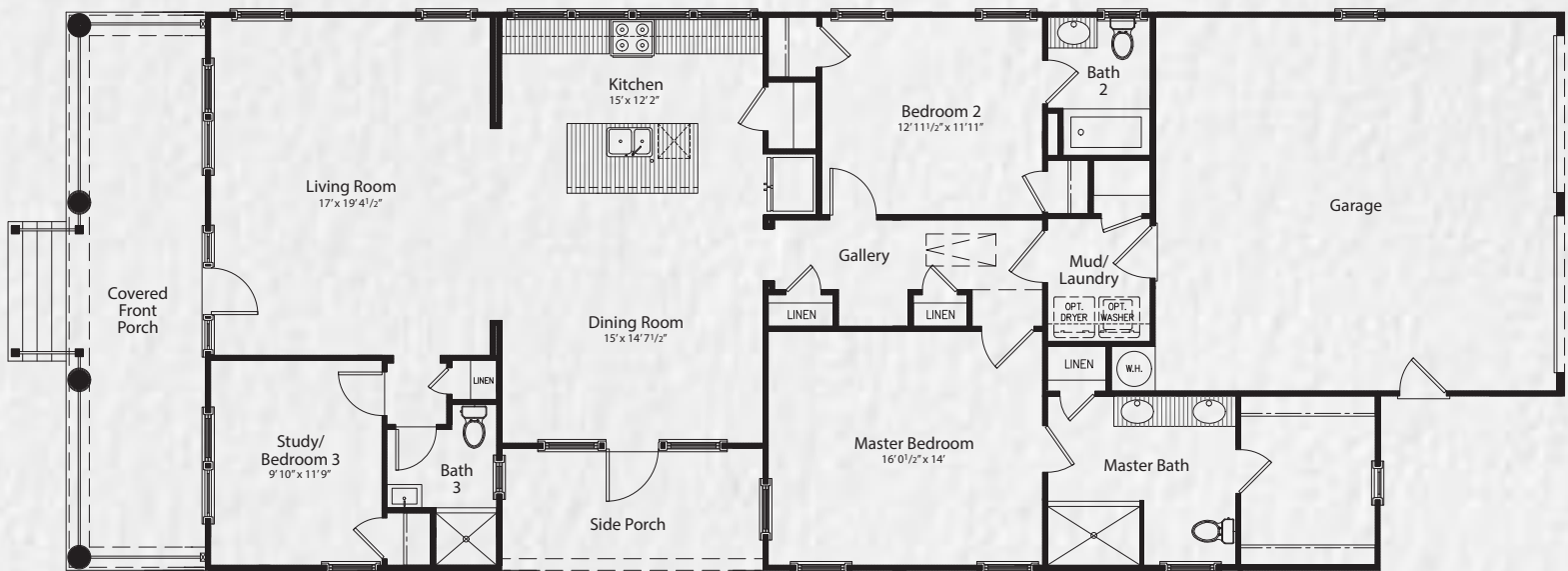
Patrick
Square

160 Thomas Green Blvd.
Clemson, SC 29631
864-654-1500

The charming Habersham is a livable and slightly more compact version of the Beaufort I. Its attached garage, large master suite and efficient use of living area space make this home a delightful choice. The Habersham offers several different elevation options that honor authentic Traditional Neighborhood Development principles. This means no two homes in Patrick Square are identical and each streetscape has its own charming, hometown feel.

Specifications

Air Conditioned Living Area	1,751 sq. ft.
Porch	269 sq. ft.
Garage	519 sq. ft.
Total Area	2,539 sq. ft.



©2018 JMC Patrick Square LLC, JMC Homes of South Carolina LLC

This does not constitute an offer to sell where prohibited by law. All artist's renditions and plans for Patrick Square are representative of planned development. Plans, prices and availability are subject to change without notice. Oral representations cannot be relied upon as correctly stating representations of the developer. For correct representations, reference should be made to the documents furnished by the developer to a buyer that are included in a sales agreement.

