

# The Beaufort II

4 Bedrooms | 4 Baths



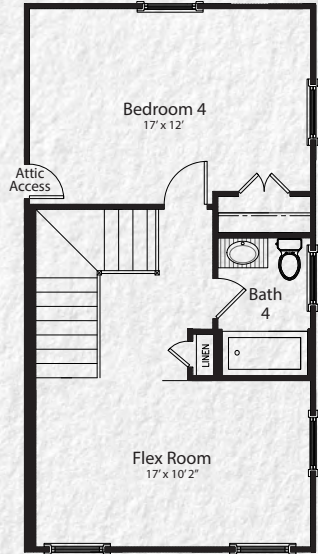
Patrick Square

160 Thomas Green Blvd.  
Clemson, SC 29631  
864-654-1500

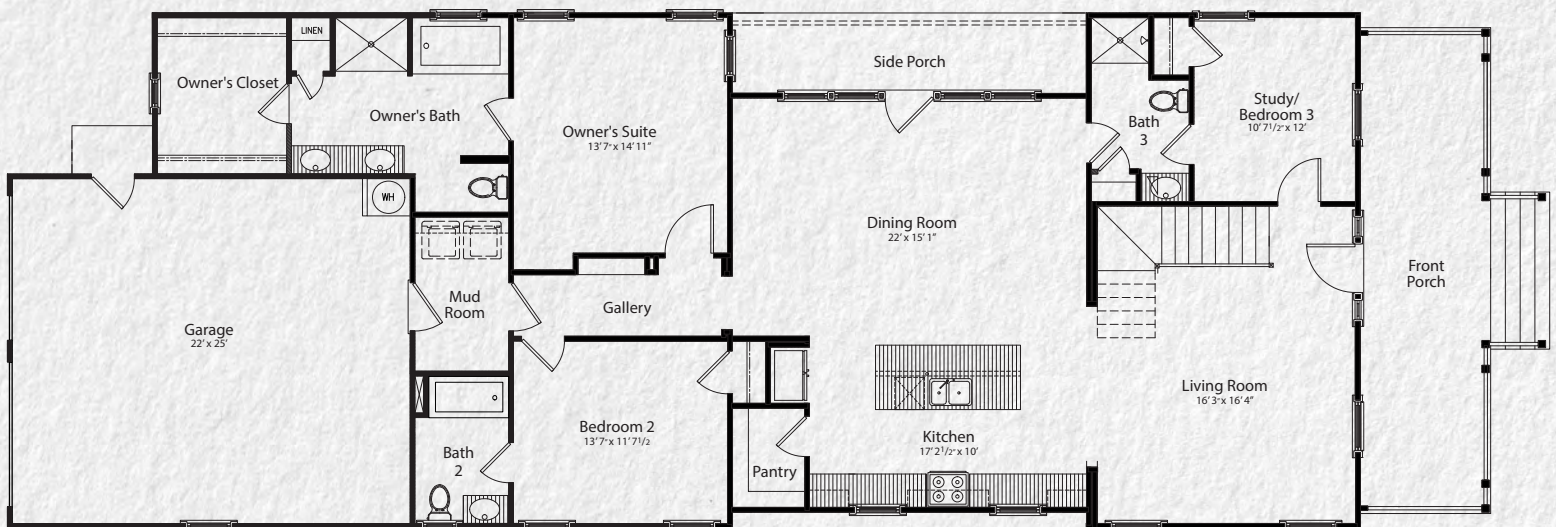
Traditional Southern architecture comes alive in the Beaufort two-story. Its double porch option and formal living room harken back to simpler times, while its large kitchen and open living area reflect modern lifestyles. The Beaufort II offers several different elevation options and an attached garage. All honor authentic Traditional Neighborhood Development principles. This means no two homes in Patrick Square are identical and each streetscape has its own charming, hometown feel.

## Specifications

Air Conditioned Living Area	2,465 sq. ft.
Porch	346 sq. ft.
Garage	545 sq. ft.
Total Area	3,356 sq. ft.



2nd Floor



1st Floor

©2020 JMC Patrick Square LLC, JMC Homes of South Carolina LLC. This does not constitute an offer to sell where prohibited by law. All improvements depicted are proposed. Developer reserves the right to alter development plans, design, specifications and timing of development and to otherwise change or eliminate project components. Oral representations cannot be relied upon as correctly stating representations of the developer. For correct representations, reference should be made to the documents furnished by the developer to a buyer that are included in a sales agreement. Prices and features subject to change without notice. These drawings are conceptual only and are for the convenience of reference. They should not be relied upon as representations, express or implied, of the final detail. The developer expressly reserves the right to make modifications, revisions and changes, which it deems desirable in its sole and absolute discretion. Dimensions are approximate width and length.

